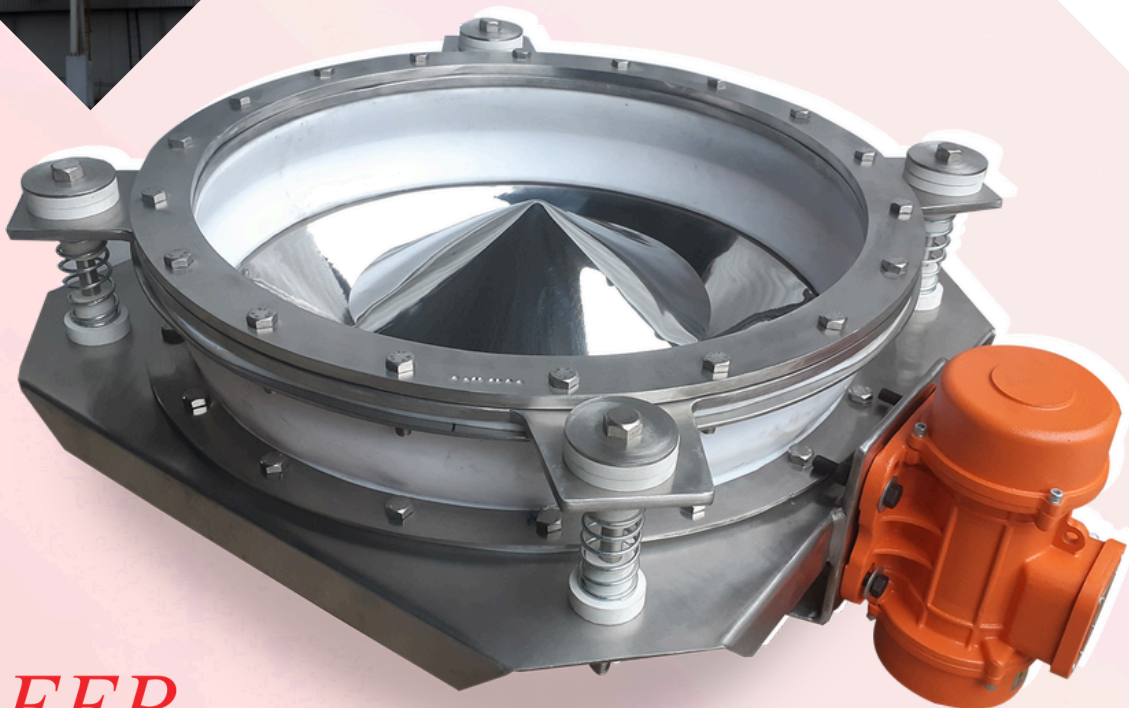
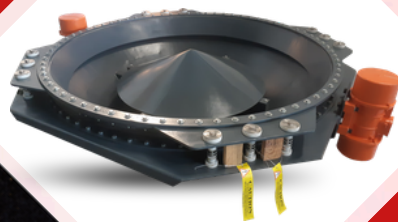


BIN ACTIVATOR



SAIDEEP
VIBRATORS PVT LTD

INTRODUCTION

Some materials when stored within Hoppers, Silos or Bins do not flow out easily due to the peculiar design of the storage vessel or due to the inherent non-flowing properties of the material. When stored for prolonged durations some materials also tend to compact or react with the storage vessels.

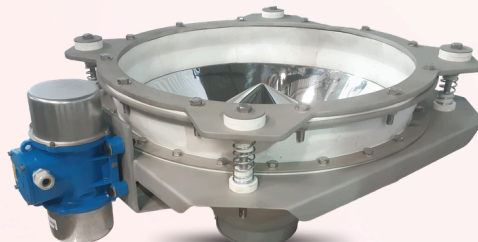
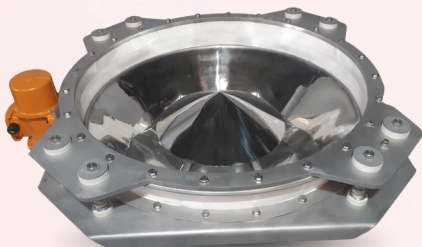
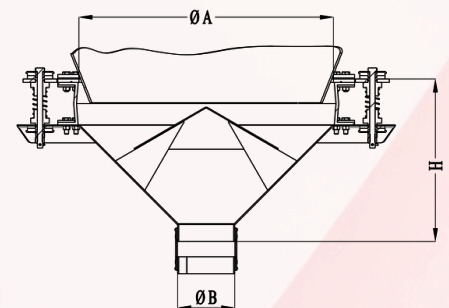
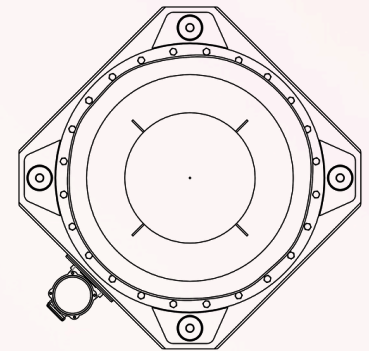
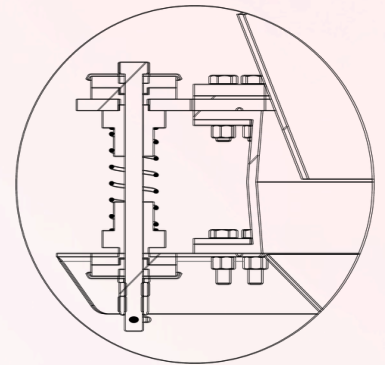
In such situations it is recommended to use Bin Activators that help ease the flow of materials which may have been clogged due to Bridging, Rat Holing or Compaction.

OPERATION

Bin Activators consist of conical shape discharge zone which is connected to the Silo / Hopper via a set of suspension hanger. The gap between the Silo / Hopper and the discharge cone is sealed with the help of Rubber Gaskets (Bellows). The inverted adjustable baffle cone vibrates through the stored materials allowing the jammed products to flow out of the Bin Activator.

BIN ACTIVATOR (MODEL-SBAL)

Model	ØA	ØB	H	Motor		Weight (Kgs.) Approx.
				KW	Qty.	
SBAL-450	450	168	330	0.16	1	65
SBAL-500	500	168	355	0.16	1	70
SBAL-600	600	168	403	0.16	1	81
SBAL-750	750	168	478	0.30	1	117
SBAL-900	900	219	529	0.35	1	155
SBAL-1000	1000	219	554	0.35	1	196
SBAL-1200	1200	273	654	0.62	1	243
SBAL-1250	1250	273	679	0.62	1	250
SBAL-1500	1500	324	779	1.15	1	340
SBAL-1800	1800	324	930	1.15	2	565
SBAL-2100	2100	406	1134	1.15	2	925
SBAL-2200	2200	406	1185	1.15	2	960
SBAL-2400	2400	406	1263	1.6	2	1090
SBAL-3000	3000	406	1565	1.8	2	1520



FEATURES

- Wide Range of Sizes available between Dia 400 mm to Dia 3000 mm.
- Heavy Duty Suspension Hangers.
- Strong Nylon Braided Rubber Bellows (Option: Silicone Food Grade White OR Neoprene Black).
- Robust Vibration Motors (CE | ISO | ATEX Certified).
- MOC Options: Mild Steel | SS 304 | SS 316L.
- Finish Options: Mirror Buffed | Matt Buffed | Bead Blasted | PU or Epoxy Painted.
- Special Add On Design Features / Modifications: High Temperature | GMP Finish | Negative or Positive Pressure | Dual Discharge.
- Supplied with complementary matching flanges.

APPLICATION INDUSTRIES / AREAS

- Food Industry: Flour, Spices, Soy, Sugar, Dairy, Herbal mix & supplements.
- Forest Products: Wood Chips & Sawdust.
- Agriculture: Animal Feed, Fertilisers, Soy Bean Meal & Spent Grain.
- Chemical Industry: Pigments, Additives, Starch, Carbon Black.
- Steel: Foundry Sand, Ores, Binders, Ferrous & Non-Ferrous Additives.
- Mining Industry: Aggregates, Kiln, Crushed Ores, Coal, Lime.
- Battery Production, Glass Manufacturing Industry, Plastics Processing etc..

