

VIBRATOR MOTOR



CE



ISO 9001
2015
CERTIFIED





INFORMATION

Unbalance Motors Generate a Rotary Centrifugal Force due to Unbalance Weights fixed on either side of Motor. This centrifugal force sets the whole mass vibrating. The Frequency of vibration depends on the mass being vibrated.

Features

- Robust Design : Motor Frames Casted in SG Iron or Aluminium.
- Mechanical Protection Structure : Can Operate under harsh, dusty environments. Complies to IP 66 specification according to IEC 60529.
- H-Class Insulated Winding : Can Withstand Temperature upto 220° C.
- Adjustable Vibration Forces : From Zero to Maximum by adjusting the position of Unbalance Weights provided on both sides of the Motor Shaft.
- Wide Range : From 2 to 8 Pole with various Standard Models.
- Silent Operation : The Vibro Motors make no unpleasant sound.
- Service Rating : Continuous Duty (S1) at maximum Centrifugal force & S4 Duty available on request.
- Centrifugal Forces : The Vibro Motors are available in a wide range of Centrifugal Forces ranging from 200 N to 130000 N.
- Operating Environments & Temperatures : For Indoor & Outdoor Use : Temperatures -20°C to +80°C.
- Tropicalizing : Class H Insulated Windings (220°C) ; Motor winding is Vacuum impregnated ; PTC Thermistor incorporated in all SG Iron Frames.
- Terminal Box : Terminal Box Connector sealed with a layer of resin to prevent damage due to Vibrations.
- Power Supply : 400 V (± 10%) 50/60 Hz 3 Φ AC. Special Voltages/Frequencies can be provided on request on additional cost.
- Bearings : All bearings used are of NSK Japan/SKF.
- Colour Coating : Polyurethane Painting Supported by (Hempe/Grand Polycoat) OR Polyester Powder Coating. (Special RAL Shades can be provided on request at no extra charge).
- Standards Supported : Conformity with European Directive ; Low Voltage 2014/35/UE ; Machine Directive 2006/42/EC.



Application

- Silos
- Hoppers
- Vibrating Feeders
- Screens
- Piping
- Threshers
- Dump Trucks



Industries

- Food
- Animal Feed
- Fertilizers
- Agriculture
- Pharmaceuticals
- Chemicals
- Plastics
- Cement
- Glass
- Air Treatment
- Automotive
- Mining



Benefits

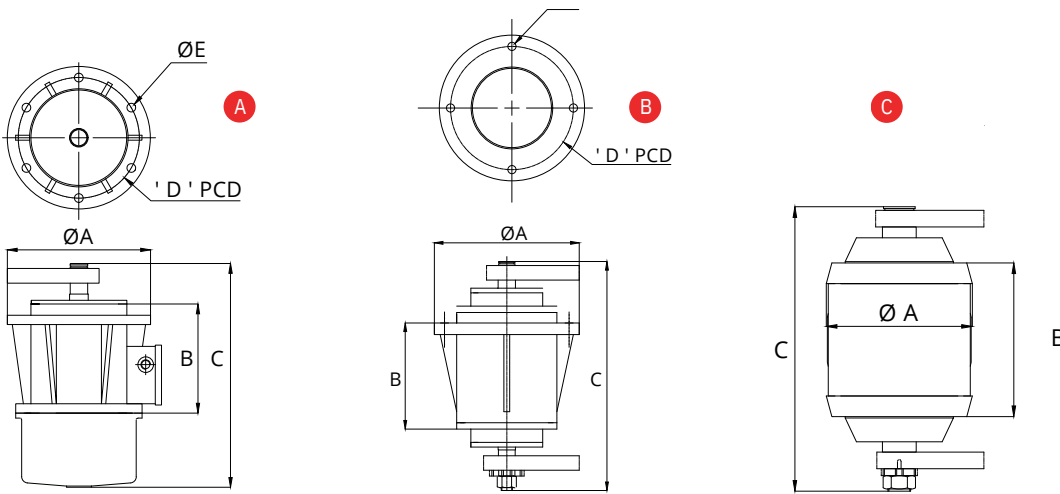
- Safe
- Economic
- Robust
- Reliable
- Easy to Install
- High Performance
- Global Availability
- Increased Productivity

Precaution

- I. Vibrators should be installed on flat surface, else local forces may develop causing breakage of legs or flanges.
- II. Vibrating force on both ends of the Motor shaft should be adjusted equally otherwise the operation will be erratic.
- III. Although the bearings are prelubricated. Please pay special attention to lubrications as per the instruction manual.



FLANGE & WEDGE MOUNTING



Flange Mounting (Enclosure : IP-66)

Technical chart of vibrating motor

Model	Ref	RPM	Centrif. Force	Power	Current	A	B	C	D	E	Weight
	Fig		N	HP	A max.						kgs.(50 Hz)
SM 30	A	1500	4000	0.5	1	230	175	360	195	14	25

Flange Mounting (Enclosure : IP-55)

Technical chart of vibrating motor

Model	Ref	RPM	Centrif. Force	Power	Current	A	B	C	D	E	Weight	
	Fig		N	HP	A max.						kgs.(50 Hz)	
SM 1	B	3000	1200	0.16	0.6	0.5	150	140	305	130	14	19.7
SM 2		1500	2000	0.25	0.7	0.6	195	135	325	165	14	20.4
SM 3		1500	4000	0.5	1	0.7	230	155	355	195	14	28.7
SM 4		1500	8000	1	1.5	1.2	250	180	390	215	14	43.5

Wedge Mounting (Enclosure : IP-55)

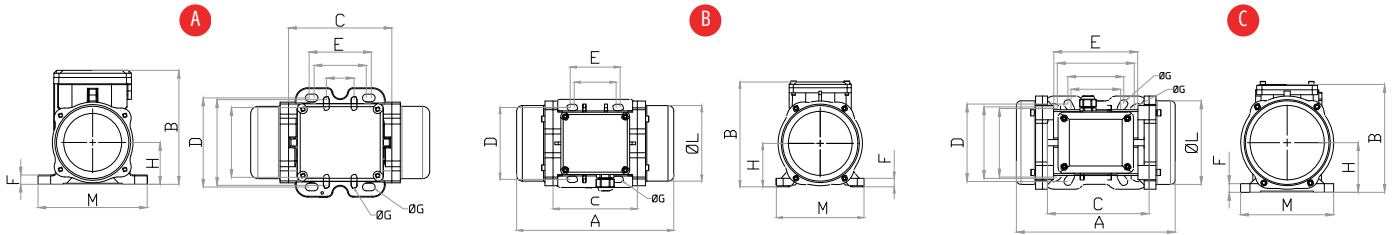
Technical chart of vibrating motor

Model	Ref	RPM	Centrif. Force	Power	Current	A	B	C	Weight	
	Fig		N	HP	A max.				kgs.(50 Hz)	
SW 1	C	1500	16000	1.5	2	1.8	238	178	452	59.3
SW 2		1500	25000	2	3	2.4	284	228	536	107.4
SW 3		1500	40000	3	5	2.8	284	228	546	135
SW 5		1000	65000	5	7.5	4	315	340	638	165.4
SW 7		1000	77000	7.5	10		315	340	638	168.3





2 POLE MOTOR: FOOT MOUNTING



Model No.	Centrif.Force N		Working Moment kg-cm		Power kW		Current A max		Suitable for Vibrating Max Weight of kgs
	50 Hz	60 Hz	50 Hz	60 Hz	50 Hz	60 Hz	50 Hz	60 Hz	
3000 rpm 230 V/400 V (+/-10%) & 3600 rpm 260 V/460 V (+/-10%) Enclosure : IP 66									
SA 60	660	670	1.35	0.82	0.08	0.09	0.16	0.18	50
SA 100	980	1080	2.01	1.52	0.1	0.11	0.19	0.18	55
SA 200	1870	1890	3.72	2.61	0.18	0.21	0.35	0.3	75
SA 300	3200	3230	6.19	4.46	0.27	0.28	0.52	0.45	175
SA 400	4000	4110	7.96	5.68	0.3	0.36	0.58	0.6	225
SA 500	5200	5340	10.27	7.38	0.5	0.58	0.96	0.97	300
SA 700	7500	7650	14.9	10.57	0.66	0.75	1.25	1.24	375
SA 800	7700	8000	15.68	11.06	0.75	0.9	1.45	1.5	500
SA 1200	9800	10130	20.26	14	0.95	1.15	1.85	1.95	750
SA 1300	13300	13650	27.58	18.86	1.3	1.38	2.44	2.25	850
SA 1610	15450	14830	30.12	21.1	1.57	1.6	2.94	2.61	900
SA 1600	15600	16080	31.26	22.2	1.57	1.6	2.94	2.61	960
SA 2000	19800	19970	36.78	27.6	2	2.1	3.75	3.42	1200
SA 2300	22500	23060	45.97	31.87	2.4	2.45	4.44	3.94	1350
SA 3200	32520	33750	68.1	43.89	2.9	2.92	5.3	4.6	1900
SA 4000	40000	40500	79.4	55.99	2.9	2.92	5.3	4.6	2150
SA 5000	50000	50500	103.24	69.76	4	4.1	7.2	6.28	2300
SA 6500	65000	65550	129.55	90.54	5.5	5.52	9.5	8	2750
SA 9000	90250	93750	179.59	129.55	10	10.3	14	18	3000

Aluminium Frame

SG Iron Frame





2 POLE MOTOR: FOOT MOUNTING

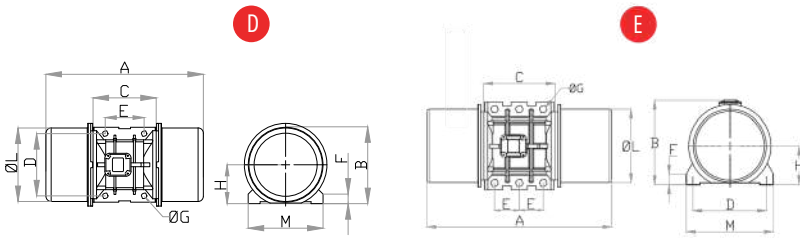


Fig A

Fig C

*	E	D	ØG
	mm		
	62-74	106	9
	33	83-102	7

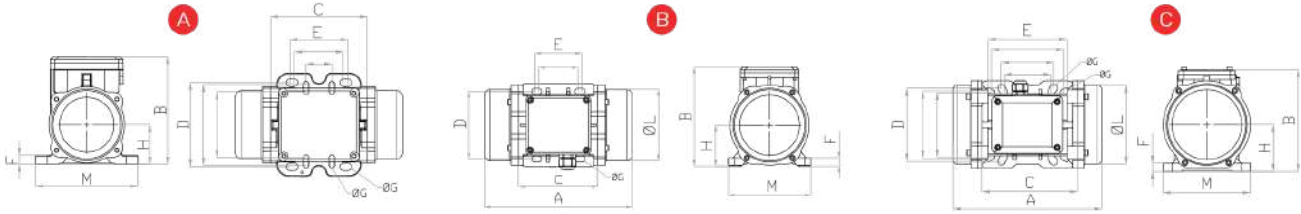
**	E	D	ØG
	mm		
	80	110	11
	90	125	13
	124	110	11
	135	115	11

Model No.	Fig	E	D	F	C	M	L	H	A	B	G	No. Of Holes	Weight kgs	
		mm	mm	mm	mm	mm	mm	mm	mm	mm	mm		50 Hz	60 Hz
3000 rpm 230/400 V (+/-10%) 50 Hz & 3600 rpm 260/460 V (+/-10%) 60 Hz Enclosure : IP 66														
SA 60	A	*	*	12	121	130	86	50	221	136	*	4	4.7	4.7
SA 100	A	*	*	12	121	130	86	50	221	136	*	4	5	5
SA 200	B	62-74	106	13	121	130	112	64	233	155	9	4	7.1	7.1
SA 300	C	**	**	14	166	150	135	80	256	175	**	4	10.2	10.2
SA 400	C	**	**	14	166	150	135	80	280	175	**	4	11.5	11.5
SA 500	D	105	140	20	186	170	160	92	347	197	13	4	19.2	19.2
SA 700	D	105	140	20	186	170	160	92	347	197	13	4	20	20
SA 800	D	120	170	22	200	208	175	98	395	219	17	4	22.7	22.7
SA 1200	D	120	170	22	200	208	175	98	395	219	17	4	23.7	23.7
SA 1300	D	120	170	22	200	208	175	98	395	219	17	4	24.2	24.2
SA 1610	D	140	190	45	190	230	204	116	511	247	17	4	46	45.5
SA 1600	D	140	190	45	190	230	204	116	511	270	17	4	46	45.5
SA 2000	D	140	190	30	220	228	221	120	455	270	17	4	59	52
SA 2300	D	140	190	30	220	228	221	120	455	270	17	4	60	51.6
SA 3200	D	155	255	35	273	302	264	147	605	325	25	4	103	101
SA 4000	D	155	255	35	273	302	264	147	605	325	25	4	107	104
SA 5000	D	155	255	35	273	302	264	147	605	325	25	4	111	106
SA 6500	D	200	320	50	325	385	378	200	625	425	28	4	228	224.5
SA 9000	D	200	320	50	325	385	378	200	625	425	28	4	240	234





4 POLE MOTOR: FOOT MOUNTING



Model No.	Centrif.Force N		Working Moment kg-cm		Power kW		Current A max		Suitable for Vibrating MaxWeight of kgs
	50 Hz	60 Hz	50 Hz	60 Hz	50 Hz	60 Hz	50 Hz	60 Hz	
1500 rpm 230/400 V (+/-10%) 50 Hz & 1800 rpm 260/460 V (+/-10%) 60 Hz Enclosure : IP 66									
SB 40	270	360	2.15	1.99	0.04	0.05	0.31	0.31	50
SB 90	750	760	5.97	4.2	0.09	0.1	0.26	0.25	90
SB 200	1940	1960	15.44	10.83	0.16	0.17	0.49	0.5	130
SB 400	4200	4230	33.43	23.38	0.3	0.35	0.84	0.86	175
SB 500	5040	5080	40.12	28.08	0.35	0.4	1.16	1.09	225
SB 700	7140	7120	56.83	39.36	0.62	0.73	1.32	1.41	325
SB 1100	11140	11220	88.67	62.02	0.65	0.78	1.5	1.7	425
SB 1200	12700	12920	99.2	69.4	0.75	0.9	1.6	1.75	480
SB 1410	13640	13880	108.57	78.72	0.9	1.1	1.7	1.78	600
SB 1710	17250	17640	137.31	91.98	1.15	1.3	2.1	2.09	750
SB 2310	20000	20390	155	115	1.5	1.8	2.1	2.09	900
SB 1400	13640	13880	108.57	78.72	0.9	1.1	1.71	1.78	650
SB 1700	17250	16640	137.31	91.98	1.15	1.3	2.16	2.09	800
SB 2400	23580	24850	187.69	137.36	1.6	1.9	3	3.2	1000
SB 2500	25570	25570	203.53	135.65	1.8	2	3.4	3.4	1250
SB 3000	31240	30700	248.66	169.75	1.9	2.3	3.7	3.8	1500
SB 3800	38530	37040	306.69	204.74	2.2	2.6	4.12	4.15	1800
SB 4300	43120	43590	343.22	240.95	2.5	3	5.7	5.8	2000
SB 5500	54950	54950	437.39	303.74	3.6	3.45	6.5	6.6	2750
SB 7200	72460	71880	576.76	397.32	5	6	9.6	9.5	3250
SB 9000	90200	90230	717.97	498.76	7.5	8.5	12	12	3500
SB 10000	100520	106430	800.1	588.3	7.8	9.4	13	13	4200

Aluminium Frame

SG Iron Frame





4 POLE MOTOR: FOOT MOUNTING

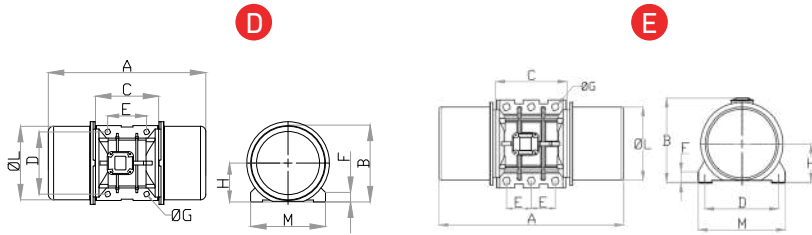


Fig A

Fig C

	E	D	ØG
*	mm		
	62-74	106	9
	33	83-102	7

	E	D	ØG
**	mm		
	80	110	11
	90	125	13
	124	110	11
	135	115	11

Model No.	Fig	E	D	F	C	M	L	H	A	B	G	No. Of Holes	Weight kgs	
		mm	mm	mm	mm	mm	mm	mm	mm	mm	mm		50 Hz	60 Hz
1500 rpm 230/400 V (+/-10%) 50 Hz & 1800 rpm 260/460 V (+/-10%) 60 Hz Enclosure : IP 66														
SB 40	A	*	*	12	121	130	86	50	221	136	*	4	5	5
SB 90	B	62-74	106	13	121	130	112	64	233	155	9	4	7.1	7.1
SB 200	C	**	**	14	166	150	135	80	280	175	**	4	11.5	11.5
SB 400	D	105	140	20	186	170	160	92	347	197	13	4	22	22
SB 500	D	105	140	20	186	170	160	92	347	197	13	4	23.5	23.5
SB 700	D	120	170	22	200	208	175	98	395	219	17	4	30	28.7
SB 1100	D	120	170	22	200	208	175	98	445	219	17	4	34.8	33.5
SB 1200	D	120	170	42	163	205	187	105	434	235	17	4	38.5	37.2
SB 1410	D	140	190	45	190	230	204	116	511	247	17	4	48.2	45.7
SB 1710	D	140	190	45	190	230	204	116	511	247	17	4	48.8	45.3
SB 2310	D	140	190	45	190	230	221	116	511	270	17	4	48.5	45.3
SB 1400	D	140	190	30	220	228	221	120	455	270	17	4	67.7	66
SB 1700	D	140	190	30	220	228	221	120	455	270	17	4	70	66.5
SB 2400	D	140	190	30	220	228	221	120	505	270	17	4	76	71.4
SB 2500	D	155	225	40	250	272	235	140	535	310	22	4	107.5	103
SB 3000	D	155	225	40	250	272	235	140	535	310	22	4	115.4	109
SB 3800	D	155	255	35	273	302	264	147	610	325	24	4	144	137.5
SB 4300	D	155	255	35	273	302	264	147	720	325	24	4	158	150
SB 5500	D	180	280	37	304	332	310	167	645	370	26	4	208	200
SB 7200	D	200	320	49	325	385	378	200	625	425	28	4	298	289.5
SB 9000	D	200	320	49	325	385	378	200	625	425	28	4	303	293
SB 10000	E	125	380	44	367	452	378	204	760	450	38	6	331	317





6 POLE MOTOR: FOOT MOUNTING

Aluminium Frame

SG Iron Frame

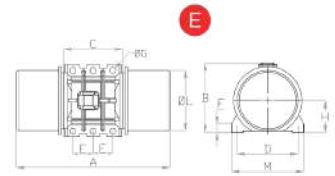
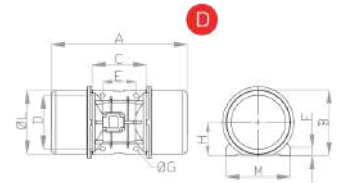
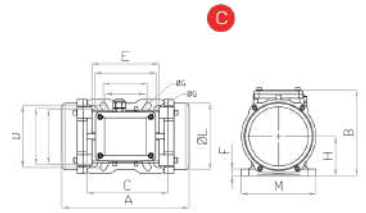
Model No.	Centrif.Force N		Working Moment kg-cm		Power kW		Current A max		Suitable for Vibrating Max Weight of kgs
	50 Hz	60 Hz	50 Hz	60 Hz	50 Hz	60 Hz	50 Hz	60 Hz	
1000 rpm 230/400 V (+/-10%) 50 Hz & 1200 rpm 260/460 V (+/-10%) 60 Hz Enclosure : IP 66									
SC 50	530	530	9.49	6.59	0.12	0.14	0.4	0.4	50
SC 100	1050	1060	18.81	13.18	0.12	0.14	0.4	0.4	60
SC 200	1870	1880	33.49	23.38	0.18	0.21	0.75	0.75	75
SC 250	2350	2390	40.5	28.4	0.18	0.21	0.8	0.8	85
SC 300	2670	2690	47.82	33.46	0.35	0.38	0.67	0.64	100
SC 500	4750	4790	85.07	59.57	0.35	0.4	1.2	1.44	250
SC 600	6000	6075	132.4	92.68	0.35	0.38	0.75	0.8	275
SC 710	7350	8050	139.1	97.38	0.68	0.76	1.75	1.9	310
SC 850	8746	9590	168.4	124.5	0.82	0.92	1.95	2.01	325
SC 810	7940	8880	141.1	112.6	0.68	0.76	1.4	1.52	350
SC 1110	10480	11040	187.69	137.31	0.75	0.8	1.42	1.55	375
SC 800	7670	8730	137.37	108.58	0.68	0.76	1.29	1.55	350
SC 1100	10480	11040	187.69	137.31	0.75	0.8	1.42	1.55	400
SC 1500	15900	15800	284.76	196.51	1.1	1.3	2.1	2.3	600
SC 1600	16730	16360	299.6	203.47	1.1	1.3	2.83	3.1	650
SC 2100	20830	20000	373.05	248.74	1.5	1.8	3	3.2	825
SC 2600	26100	24650	467.44	306.7	1.96	2.1	3.63	3.9	1000
SC 2700	26478	34335	524	364	2.2	2.2	5	4.6	1000
SC 3000	30170	30500	540.33	379.71	2.2	2.4	4.5	4.8	1250
SC 3400	34335	34335	680	468	2.2	2.2	5	4.6	1300
SC 3800	38000	35175	680.38	437.41	2.5	3	4.67	4.9	1600
SC 4700	46800	46970	838.34	584.17	3.2	3.9	6.5	6.85	2000
SC 5150	52300	52550	838.34	584.17	3.8	4	6.9	7.1	2200
SC 5200	51900	52630	929.86	654.57	3.8	4	6.92	7.1	2300
SC 6500	65000	66250	1165.19	823.96	4.3	5	7.76	7.81	2700
SC 7200	71520	71920	1315.2	920.5	5.5	6.5	11.2	11.6	2850
SC 7300	73575	74350	1455	1010	4.5	5	10	10.7	3000
SC 8000	80200	81320	1435.98	929.8	7.1	7.5	12.6	11.6	3100
SC 9000	89350	93690	1600.39	1165.23	7.5	8.3	13.2	12.6	4000
SC 10000	99850	99700	1788.44	1239.98	7.6	8	13.5	12.7	4750
SC 10300	103000	103000	2037	1414	6.63	6.63	11.2	10	5000
SC 13000	130000	130000	2329.84	1647.42	10	10	17	16	5500





6 POLE MOTOR: FOOT MOUNTING

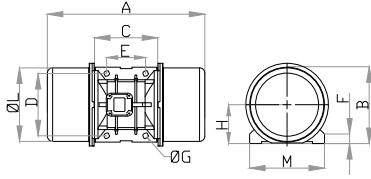
Model No.	Fig	E	D	F	C	M	L	H	A	B	G	No. Of Holes	Weight kgs	
		mm	mm	mm	mm	mm	mm	mm	mm	mm	mm		50 Hz	60 Hz
1000 rpm 230/400 V (+/-10%) 50 Hz & 1200 rpm 260/460 V (+/-10%) 60 Hz Enclosure : IP 66														
SC 50	C	**	**	14	166	150	135	80	256	175	**	4	10.2	10.2
SC 100	C	**	**	14	166	150	135	80	312	175	**	4	12.6	12.6
SC 200	D	105	140	20	186	170	160	92	347	197	13	4	22	22
SC-250	D	105	140	20	186	170	160	92	347	197	13	4	22.5	22.5
SC 300	D	120	170	22	200	208	175	98	445	219	17	4	30	28
SC 500	D	120	170	22	200	208	175	98	445	219	17	4	34.4	31.6
SC 600	D	120	170	42	163	205	187	105	434	235	17	4	38.5	36
SC 710	D	120	170	46	187	210	232	155	361	295	18	4	44.5	41.5
SC 850	D	120	170	46	187	210	232	155	381	295	18	4	55	50
SC 810	D	140	190	45	190	230	204	116	511	247	17	4	48.8	45.3
SC 1110	D	140	190	45	190	230	221	116	517	247	17	4	65	60.5
SC 800	D	140	190	30	220	228	221	120	455	270	17	4	70	66.5
SC 1100	D	140	190	30	220	228	221	120	505	270	17	4	76	71.4
SC 1500	D	140	190	30	220	228	221	120	580	270	17	4	88.5	81.7
SC 1600	D	155	225	40	250	272	235	140	570	310	22	4	115.4	108.9
SC 2100	D	155	225	40	250	272	235	140	625	310	22	4	125.6	117.6
SC 2600	D	155	255	35	273	302	264	147	720	325	24	4	160	150
SC 2700	D	170	270	62	220	320	324	170	615	355	26	4	161	156
SC 3000	D	155	255	35	273	302	264	147	720	325	24	4	174	162.2
SC 3400	D	170	270	62	220	320	324	170	615	355	26	4	165	160
SC 3800	D	180	280	37	304	332	310	167	725	370	26	4	229	217
SC 4700	D	180	280	37	304	332	310	167	770	370	26	4	248	233.3
SC 5150	D	180	280	37	304	332	310	167	796	355	26	4	269	254
SC 5200	D	200	320	49	325	385	378	200	705	425	28	4	314	301.2
SC 6500	D	200	320	49	325	385	378	200	705	425	28	4	331	315.4
SC 7200	D	200	320	49	325	385	378	200	810	425	28	4	340	323.6
SC 7300	E	124	305	53	298	357	378	203	824	425	26	6	345	325.4
SC 8000	D	200	320	49	325	385	378	200	810	425	28	4	358	338.4
SC 9000	D	200	320	49	325	385	378	200	810	425	28	4	362	340.4
SC 10000	E	125	380	44	367	452	378	204	855	450	38	6	412	385
SC 10300	E	118	394	72	295	454	454	233	850	425	26	6	469	453
SC 13000	E	125	380	44	367	452	378	204	955	450	38	6	465	432



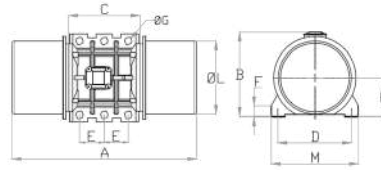


8 POLE MOTOR: FOOT MOUNTING

D



E



Aluminium Frame

SG Iron Frame

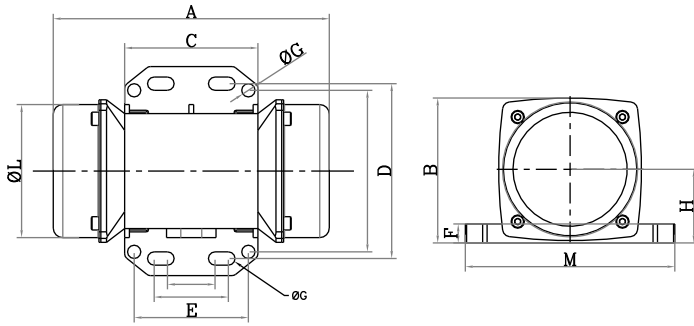
Model No.	Centrif.Force N		Working Moment kg-cm		Power kW		Current A max		Suitable for Vibrating Max Load in kg
	50 Hz	60 Hz	50 Hz	60 Hz	50 Hz	60 Hz	50 Hz	60 Hz	
750 rpm 230/400 V (+/-10%) 50 Hz & 900 rpm 260/460 V (+/-10%) 60 Hz Enclosure : IP 66									
SD 150	1030	1500	33.49	0.23	0.25	1.15	1.15	1.15	125
SD 250	1755	2525	56.93	0.35	0.38	1.15	1.15	1.15	190
SD 400	2590	3725	84.02	0.35	0.38	1.15	1.15	1.15	275
SD 910	6250	9000	202.4	0.4	0.5	1.4	1.3	1.3	525
SD 650	4225	6100	137.37	0.5	0.6	1.2	1.2	1.2	375
SD 900	5775	8325	187.69	0.65	0.7	1.25	1.3	1.3	550
SD 1300	9225	13300	299.6	1.2	1.2	2.5	1.8	1.8	700
SD 2100	14500	20750	467.44	1.5	1.8	2.8	2.9	2.9	825
SD 3100	21000	30150	680.38	2	2.3	3.8	4	4	1450
SD 3800	25800	37200	838.34	2.5	3	6	6	6	1700
SD 4200	28600	41200	929.86	2.9	3.4	6.5	6.5	6.5	2000
SD 5300	35900	51650	1165.19	4	4.3	8.5	8	8	2250
SD 6400	63765	63765	2242	5.65	5.65	13.7	13.7	13.7	3250
SD 6500	44200	63650	1435.98	5	5.9	10	10	10	2750
SD 10000	68000	97550	2200.43	6.8	7.5	13.5	12.5	12.5	4750

Model No.		E	D	F	C	M	L	H	A	B	G	No. Of Holes	Weight kgs	
		mm	mm	mm	mm	mm	mm	mm	mm	mm	mm		50 Hz	60 Hz
750 rpm 230/400 V (+/-10%) 50 Hz & 900 rpm 260/460 V (+/-10%) 60 Hz Enclosure : IP 66														
SD 150	D	105	140	22	178	168	158	92	338	196	13	4	21.4	
SD 250	D	120	170	22	205	209	170	94	397	210	17	4	29	
SD 400	D	120	170	22	205	209	170	94	451	210	17	4	35	
SD 910	D	140	190	45	190	230	204	116	510	246	17	4	65	66
SD 650	D	140	190	30	220	228	221	120	448	270	17	4	65	
SD 900	D	140	190	30	220	228	221	120	510	270	17	4	71	
SD 1300	D	155	225	40	250	272	235	140	556	310	22	4	100	
SD 2100	D	155	255	35	273	302	264	147	708	325	24	4	149	
SD 3100	D	180	280	37	304	332	310	167	683	370	26	4	215	
SD 3800	D	180	280	37	304	332	310	167	733	370	26	4	231	
SD 4200	D	200	320	49	325	385	378	200	685	425	28	4	280	
SD 5300	D	200	320	49	325	385	378	200	685	425	28	4	305	
SD 6400	E	118	394	72	295	454	454	233	850	425	26	6	469	
SD 6500	D	200	320	49	325	385	378	200	785	425	28	4	325	
SD 10000	E	125	380	44	367	452	378	204	826	450	38	6	420	



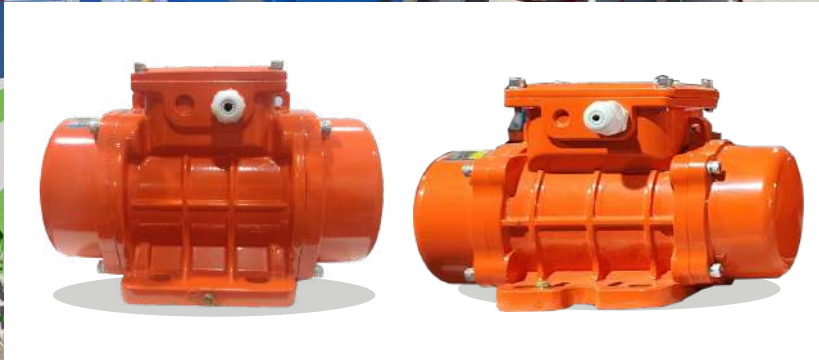


MICRO MOTOR



Micro Motor (Three Phase) 2 Pole 3000 rpm 400 V (+/-10%) 50 Hz & 3600 rpm 460 V (+/-10%) 60 Hz IP-66																						
Model No.	Centrif.Fo ceN		Working Moment kg-cm		Power kW		Current A max		Fig	E	D	F	C	M	L	H	A	B	G	No. Of Holes	Weight kgs	
	50 Hz	60 Hz	50 Hz	60 Hz	50 Hz	60 Hz	50 Hz	60 Hz		mm	mm	mm	mm	mm	mm	mm	mm	mm	mm		mm	50 Hz
SA 21	200	290	0.4	0.4	0.04	0.04	0.12	0.1	B	25-40	92	10	74	110	71	39	156	78	6.5	4	2.1	
SA 41	450	650	0.9	0.9	0.06	0.06	0.18	0.2	B	25-40	92	10	74	110	71	39	170	78	6.5	4	2.2	

Micro Motor (Single Phase) 2 Pole 3000 rpm 230 V (+/-10%) 50 Hz & 3600 rpm 260 V (+/-10%) 60 Hz IP-66																						
Model No.	Centrif.Fo ceN		Working Moment kg-cm		Power kW		Current A max		Fig	E	D	F	C	M	L	H	A	B	G	No. Of Holes	Weight kgs	
	50 Hz	60 Hz	50 Hz	60 Hz	50 Hz	60 Hz	50 Hz	60 Hz		mm	mm	mm	mm	mm	mm	mm	mm	mm	mm		50 Hz	60 Hz
SA21M	200	290	0.4	0.4	0.04	0.06	0.2	0.8	B	25-40	92	10	74	110	71	39	156	78	6.5	4	2.1	
SA41M	450	650	0.6	0.9	0.06	0.07	0.25	0.8	B	25-40	92	10	74	110	71	39	170	78	6.5	4	2.2	



VIBRATORY EQUIPMENT



Vibratory Motor



High Frequency Pneumatic Shutter Vibrator



Pneumatic Vibrators



Vibratory Screens



Tumbler Screen



Bin Activators



Inline Vibro Screen



Vacuum Sifter



Linear Vibrating Screen



Vibratory Conveyor

ELECTRO-MAGNETIC EQUIPMENT



Vibratory Bowl Feeder



Diamond Sorting Machine



Electromagnetic Suspended Magnet



Electromagnetic Impact Vibrator



Electromagnetic Vibrating Table



Electromagnetic Vibro Feeder



Electromagnetic Vibrating Feeder

MAGNETIC EQUIPMENT



Drawer type Magnetic Grill



Liquid Line Trap Magnets



Bullet Magnet



Suspension Magnet



Over Band Magnetic Separator



Wet Drum Magnetic Separators



Magnetic Roll Separator



Drum Type Magnetic Separator



Deep Reach Magnetic Separator



Magnetic Pulley



*Technology That Lays
The Foundation Of Your Dreams...*

+ 91 9867024201 / 9867024202

sales@saideeponline.com

Office Address - A11 & A24, Laghu Udyog Kendra, I B Patel Road,
Goregaon East, Mumbai 400063, Maharashtra, India.

Factory - Plot No. 17, 18, 19 & 21, The Palghar Taluka Industrial Co-op. Estate,
Palghar West, Palghar 401404, Maharashtra, India.

www.saideeponline.com

